

**LEGEND & ABBREVIATIONS**

- FOUND BRASS CAP
- FOUND BRASS CAP FLUSH
- FOUND MONUMENT AS NOTED
- SET 1/2" REBAR RLS #19854 OR AS NOTED
- BRASS CAP FLUSH PER MAG STD. DTL. 120-1 TYPE "B" TO BE SET BY THE SURVEYOR DURING THE CONSTRUCTION PERIOD
- MARIQUA COUNTY RECORDS
- 30'x60' RECIPROCAL ACCESS EASEMENT
- R/A.E. RIGHT-OF-WAY
- PUBLIC UTILITY EASEMENT
- ASSESSOR'S PARCEL NUMBER
- VEHICULAR NON-ACCESS EASEMENT
- V.N.A.E.
- EASEMENT LINE
- BOUNDARY LINE
- RIGHT-OF-WAY
- CENTERLINE

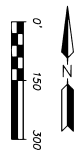
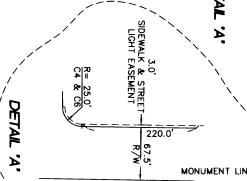
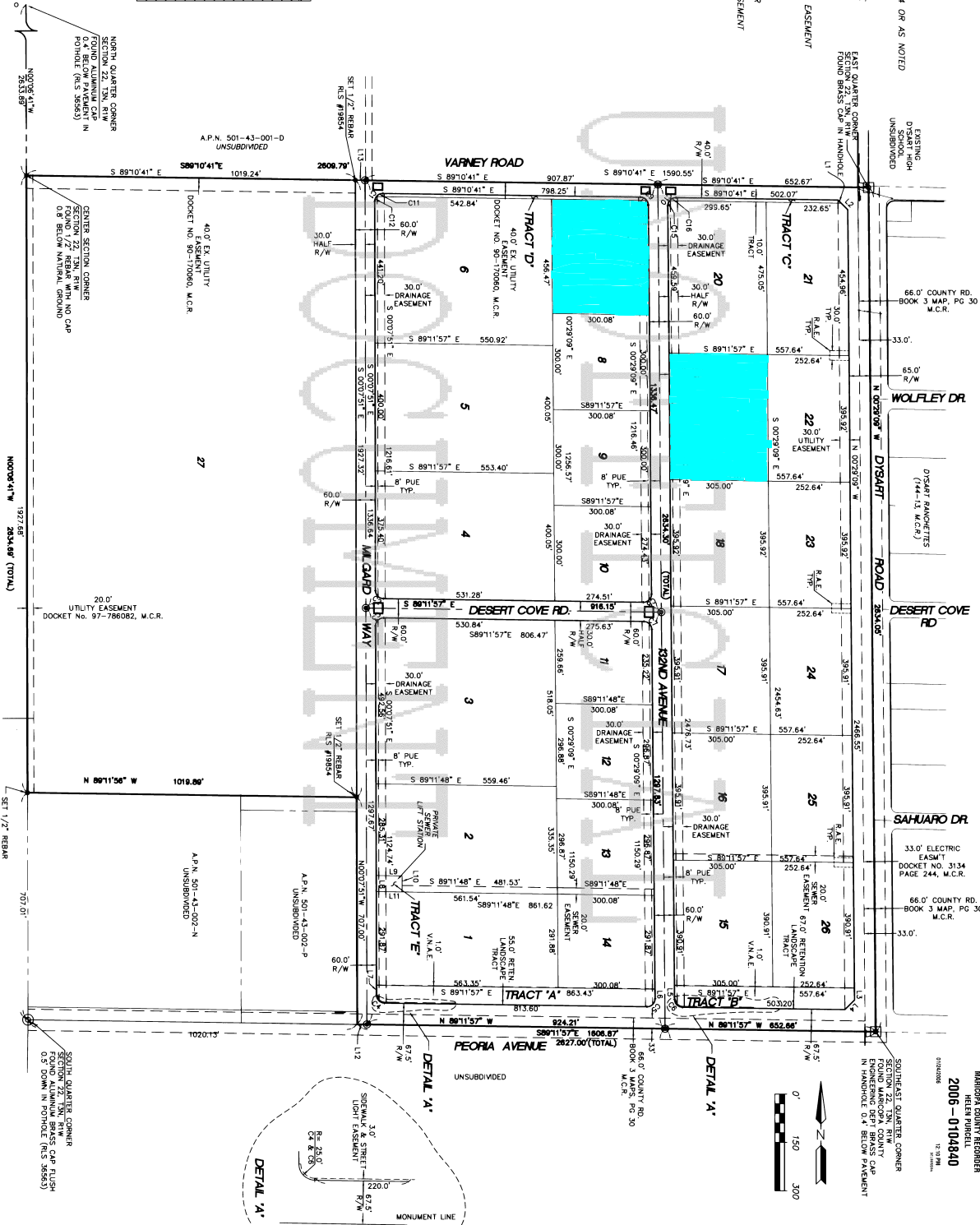
LOT NO.	AREA (AC)	AREA (SQ. FT.)
1	4.227	183,897.83
2	6.824	298,780.34
3	2.084	92,171.19
4	5.752	250,801.18
5	2.454	108,332.72
6	2.061	92,030.00
7	2.062	92,030.00
8	2.062	92,030.00
9	2.062	92,030.00
10	2.062	92,030.00
11	1.783	77,771.32
12	2.045	89,052.49
13	2.045	89,052.49
14	2.045	89,052.49
15	2.794	119,198.78
16	2.714	120,233.78
17	2.714	120,233.78
18	2.714	120,233.78
19	2.714	120,233.78
20	2.746	119,774.61
21	2.746	119,774.61
22	2.285	99,891.12
23	2.285	99,891.12
24	2.285	99,891.12
25	2.285	99,891.12
26	2.285	99,891.12
27	2.285	99,891.12
28	2.285	99,891.12
29	2.285	99,891.12
30	2.285	99,891.12
31	2.285	99,891.12
32	2.285	99,891.12
33	2.285	99,891.12
34	2.285	99,891.12
35	2.285	99,891.12
36	2.285	99,891.12
37	2.285	99,891.12
38	2.285	99,891.12
39	2.285	99,891.12
40	2.285	99,891.12
41	2.285	99,891.12
42	2.285	99,891.12
43	2.285	99,891.12
44	2.285	99,891.12
45	2.285	99,891.12
46	2.285	99,891.12
47	2.285	99,891.12
48	2.285	99,891.12
49	2.285	99,891.12
50	2.285	99,891.12
51	2.285	99,891.12
52	2.285	99,891.12
53	2.285	99,891.12
54	2.285	99,891.12
55	2.285	99,891.12
56	2.285	99,891.12
57	2.285	99,891.12
58	2.285	99,891.12
59	2.285	99,891.12
60	2.285	99,891.12
61	2.285	99,891.12
62	2.285	99,891.12
63	2.285	99,891.12
64	2.285	99,891.12
65	2.285	99,891.12
66	2.285	99,891.12
67	2.285	99,891.12
68	2.285	99,891.12
69	2.285	99,891.12
70	2.285	99,891.12
71	2.285	99,891.12
72	2.285	99,891.12
73	2.285	99,891.12
74	2.285	99,891.12
75	2.285	99,891.12
76	2.285	99,891.12
77	2.285	99,891.12
78	2.285	99,891.12
79	2.285	99,891.12
80	2.285	99,891.12
81	2.285	99,891.12
82	2.285	99,891.12
83	2.285	99,891.12
84	2.285	99,891.12
85	2.285	99,891.12
86	2.285	99,891.12
87	2.285	99,891.12
88	2.285	99,891.12
89	2.285	99,891.12
90	2.285	99,891.12
91	2.285	99,891.12
92	2.285	99,891.12
93	2.285	99,891.12
94	2.285	99,891.12
95	2.285	99,891.12
96	2.285	99,891.12
97	2.285	99,891.12
98	2.285	99,891.12
99	2.285	99,891.12
100	2.285	99,891.12

QUARTER	FRADIUS	LENGTH	DELTA	TANGENT
C1	25.00	39.89	80.92710°	25.00
C2	25.00	39.89	80.92710°	25.00
C3	25.00	39.89	80.92710°	25.00
C4	25.00	39.89	80.92710°	25.00
C5	25.00	39.89	80.92710°	25.00
C6	25.00	39.89	80.92710°	25.00
C7	25.00	39.89	80.92710°	25.00
C8	25.00	39.89	80.92710°	25.00
C9	25.00	39.89	80.92710°	25.00
C10	25.00	39.89	80.92710°	25.00
C11	25.00	39.89	80.92710°	25.00
C12	25.00	39.89	80.92710°	25.00
C13	25.00	39.89	80.92710°	25.00
C14	25.00	39.89	80.92710°	25.00
C15	25.00	39.89	80.92710°	25.00
C16	25.00	39.89	80.92710°	25.00
C17	25.00	39.89	80.92710°	25.00
C18	25.00	39.89	80.92710°	25.00
C19	25.00	39.89	80.92710°	25.00
C20	25.00	39.89	80.92710°	25.00
C21	25.00	39.89	80.92710°	25.00
C22	25.00	39.89	80.92710°	25.00
C23	25.00	39.89	80.92710°	25.00
C24	25.00	39.89	80.92710°	25.00
C25	25.00	39.89	80.92710°	25.00
C26	25.00	39.89	80.92710°	25.00
C27	25.00	39.89	80.92710°	25.00
C28	25.00	39.89	80.92710°	25.00
C29	25.00	39.89	80.92710°	25.00
C30	25.00	39.89	80.92710°	25.00
C31	25.00	39.89	80.92710°	25.00
C32	25.00	39.89	80.92710°	25.00
C33	25.00	39.89	80.92710°	25.00
C34	25.00	39.89	80.92710°	25.00
C35	25.00	39.89	80.92710°	25.00
C36	25.00	39.89	80.92710°	25.00
C37	25.00	39.89	80.92710°	25.00
C38	25.00	39.89	80.92710°	25.00
C39	25.00	39.89	80.92710°	25.00
C40	25.00	39.89	80.92710°	25.00
C41	25.00	39.89	80.92710°	25.00
C42	25.00	39.89	80.92710°	25.00
C43	25.00	39.89	80.92710°	25.00
C44	25.00	39.89	80.92710°	25.00
C45	25.00	39.89	80.92710°	25.00
C46	25.00	39.89	80.92710°	25.00
C47	25.00	39.89	80.92710°	25.00
C48	25.00	39.89	80.92710°	25.00
C49	25.00	39.89	80.92710°	25.00
C50	25.00	39.89	80.92710°	25.00

LINE	LENGTH	BEARING
L1	24.51	N44.925°W
L2	31.72	S00.292°E
L3	41.95	S45.927°W
L4	28.24	S00.723°E
L5	50.41	S00.723°E
L6	50.41	S00.723°E
L7	50.41	S00.723°E
L8	50.41	S00.723°E
L9	50.41	S00.723°E
L10	50.41	S00.723°E
L11	50.41	S00.723°E
L12	50.41	S00.723°E
L13	50.41	S00.723°E
L14	50.41	S00.723°E
L15	50.41	S00.723°E
L16	50.41	S00.723°E
L17	50.41	S00.723°E
L18	50.41	S00.723°E
L19	50.41	S00.723°E
L20	50.41	S00.723°E
L21	50.41	S00.723°E
L22	50.41	S00.723°E
L23	50.41	S00.723°E
L24	50.41	S00.723°E
L25	50.41	S00.723°E
L26	50.41	S00.723°E
L27	50.41	S00.723°E
L28	50.41	S00.723°E
L29	50.41	S00.723°E
L30	50.41	S00.723°E
L31	50.41	S00.723°E
L32	50.41	S00.723°E
L33	50.41	S00.723°E
L34	50.41	S00.723°E
L35	50.41	S00.723°E
L36	50.41	S00.723°E
L37	50.41	S00.723°E
L38	50.41	S00.723°E
L39	50.41	S00.723°E
L40	50.41	S00.723°E
L41	50.41	S00.723°E
L42	50.41	S00.723°E
L43	50.41	S00.723°E
L44	50.41	S00.723°E
L45	50.41	S00.723°E
L46	50.41	S00.723°E
L47	50.41	S00.723°E
L48	50.41	S00.723°E
L49	50.41	S00.723°E
L50	50.41	S00.723°E

**FINAL PLAT FOR SKYWAY BUSINESS PARK**

BOOK 808 PAGE 23  
OFFICIAL RECORD OF  
MARIQUA COUNTY RECORDER  
HELEN PURCELL  
2006-0104840  
12-18-06



SHEET #	2 OF 2
SCALE	FINAL PLAT
DATE	08-20-05
PROJECT #	297610

REVISIONS
Tract A&B, dedication notes

**SKYWAY BUSINESS PARK**  
CITY OF SURPRISE  
MARIQUA COUNTY, ARIZONA



**PROJECT DESIGN CONSULTANTS**  
Planning | Landscape Architecture | Environmental | Engineering | Survey

2006 East Camelback Road  
Phoenix, AZ 85016  
TEL: 602.998.8888  
WWW.PDCCONSULTANTS.COM

CHECKED BY: G.S.    DRAWN BY: P.T.

