

# AVAILABLE - BULLARD VILLAGE CENTER 10.25 ACRES - GOODYEAR, ARIZONA



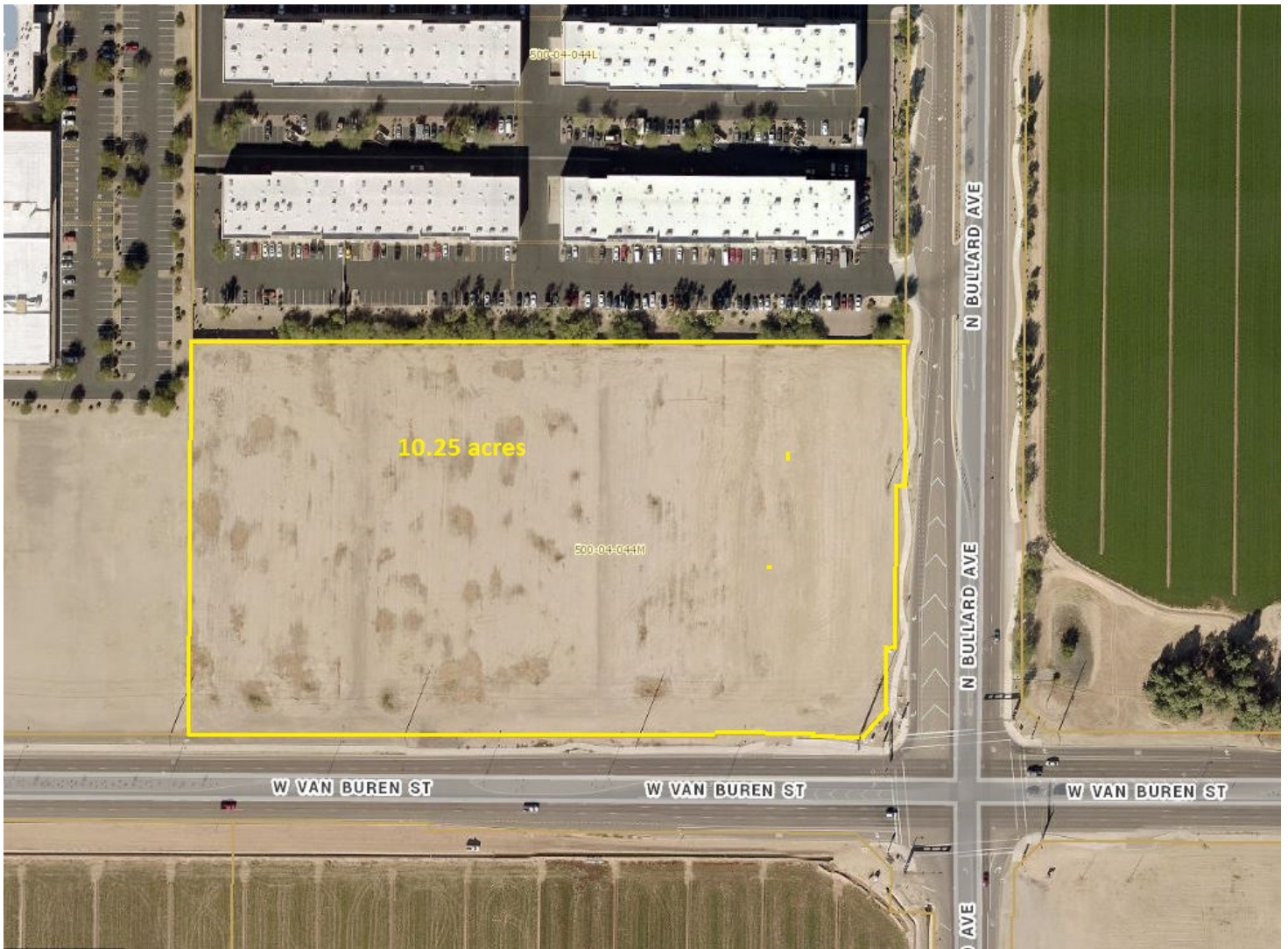
10.25 acres commercial land at the NW corner of Bullard Ave. & Van Buren St. in the City of Goodyear, AZ. Site is fully improved with curb, gutter, sidewalk. All utilities to the site. Zoned PAD with C-2 uses allowed.

**Exclusively offered at \$3,100,000.00**



Contact George Quinif  
Tel. (602) 952-0123  
Email [quinif@peakaz.com](mailto:quinif@peakaz.com)  
Visit [www.peakaz.com](http://www.peakaz.com)





Bullard Village Center PAD allows most retail, office and commerce park uses. Owner may consider partial sale. Offered at \$6.95 psf. Section corner, Signalized intersection. In the heart of the Goodyear Employment Corridor. Neighbors include Cancer Center of America, Goodyear Commerce Center, Snyder's of Hanover, Southwest Specialty Foods, City of Goodyear and Michael Lewis Company. 1/2 mile south of I-10 full interchange.

Parcel # 500-04-044M - 2016 Re taxes \$22,400.

High visibility site – Shovel Ready - Foreign Trade Zone Capable

Contact George Quinif Tel. (602) 952-0123 \* [quinif@peakaz.com](mailto:quinif@peakaz.com)



# Parcel Map

